

TSX.V: GEM Frankfurt: BR2P (WKN: A2QENP) OTC: GBMIF

Green⁺Battery

minerals inc

reduce
reuse
recharge

Plugged Into High Tech Minerals

August 2021 - PRESENTATION

6

12.011

C

[He]2s²2p²
carbon

Forward Looking Statements – DISCLAIMER

Except for historical information, this presentation may contain certain “forward-looking” statements and information relating to Green Battery Minerals Inc. that are based on the beliefs of Green Battery Minerals Inc. management, as well as assumptions made by and information currently available to Green Battery Minerals Inc. management. Such statements reflect the current risks, uncertainties and assumptions related to certain factors including but not limited to, without limitations, exploration and development risks, expenditure and financing requirements, title matters, operating hazards, metal prices, political and economic factors, competitive factors, general economic conditions, relationships with vendors and strategic partners, governmental regulation and supervision, seasonality, technological change, industry practices, and one-time events. Should any one or more risks or uncertainties materialize or change, or should any underlying assumptions prove incorrect, actual results and forward-looking statements may vary materially from those described herein. Green Battery Minerals Inc. does not assume the obligation to update any forward-looking statement. The factors that could cause actual results to differ materially include, but are not limited to, the following: general economic conditions; changes in financial markets; the impact of exchange rates; political conditions and developments in countries in which the Company operates; changes in the supply, demand and pricing of the metal commodities which the Company mines or hopes to find and successfully mine; changes in regulatory requirements impacting the Company’s operations; the ability to properly and efficiently staff the Company’s operations; the sufficiency of current working capital and the estimated cost and availability of funding for the continued exploration and development of the Company’s exploration properties. This list is not exhaustive and these and other factors should be considered carefully, and readers should not place undue reliance on the Company’s forward-looking statements. As a result of the foregoing and other factors, no assurance can be given as to any such future results, levels of activity or achievements and neither the Company nor any other person assumes responsibility for the accuracy and completeness of these forward-looking statements. The Mason Graphite NI 43-101 mineral resource estimate and other information was sourced from the Mason Graphite news releases. The Qualified Person did not verify the information contained within the Mason Graphite news release and the mineralization on the Mason Graphite property is not necessarily indicative of the mineralization on the Company’s property.

Employees are a Company's Competitive Advantage



*Our team has found,
built and operated
mines.*

*Not just one...
but over 15!*



Green Battery Minerals Inc. is an ESG Committed Company

*The **GREEN** in our name and logo represents a choice in the way we do business.
The well-being and respect of the environment and people comes first.*



ENVIRONMENT

- Climate Stability
- Waste Management
- Innovation
- Natural Resources



SOCIAL

- Human Capital
- Value Chain - Ethical Supply Chain
- Community
- Diversity



GOVERNANCE

- Risk Management
- Anti-Bribery & Corruption
- Corp. Governance
- Transparency

We are committed to practicing ESG.



“Our cells should be called Nickel-Graphite, because primarily the cathode is nickel and the anode side is graphite with silicon oxide... [there’s] a little bit of lithium in there, but it’s like the salt on the salad,”

Elon Musk – Tesla CEO

Capital Structure

Shares outstanding	37,591,340
Warrants outstanding	18,202,265
Options outstanding	1,230,000
Fully diluted shares	57,023,605

POTENTIAL UPSIDE MARKET CAP COMPARISON

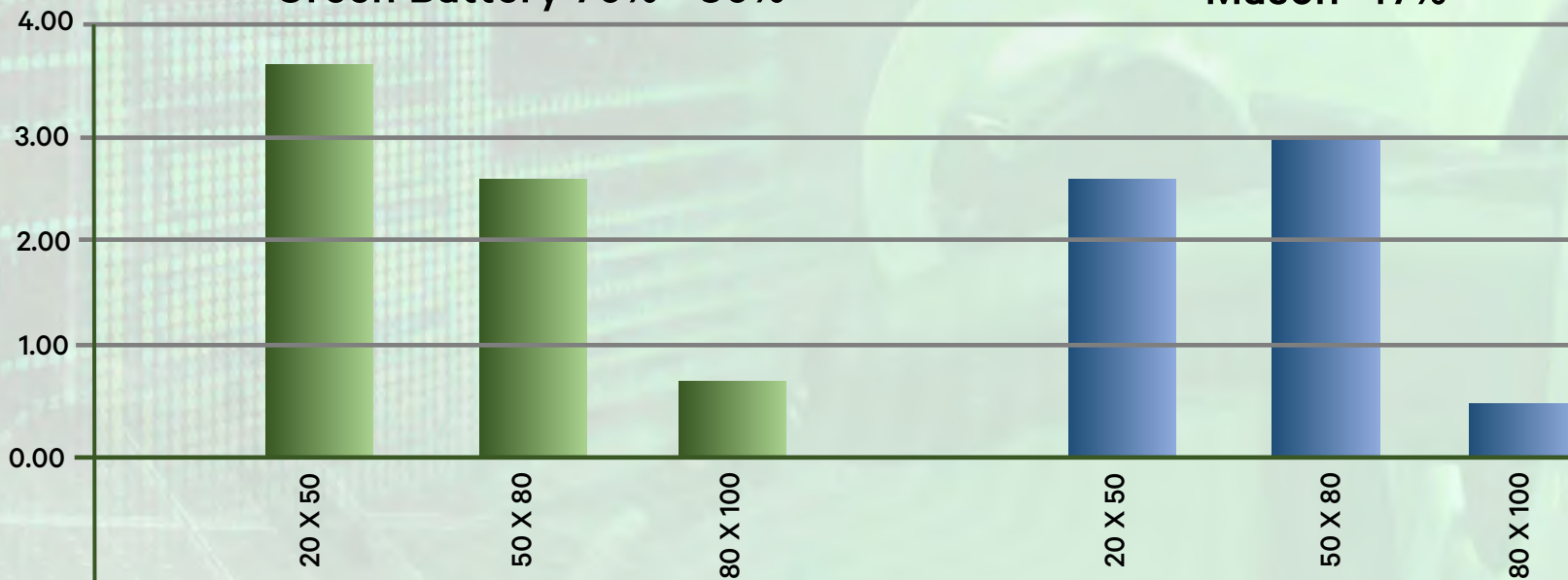
	Mason Graphite	Nouveau Monde Graphite	Green Battery Minerals
Outstanding shares	136,227,585	369,163,932	37,591,340
Share Price 2021-02	\$ 1.00	\$ 2.25	\$ 0.40
Total Market Cap.	\$ 136,227,585	\$ 830,618,847	\$ 15,035,535

Estimates of Producible Concentrates

% of Graphite That is Jumbo or Large Flake. Who Has More?

Green Battery 70% - 80%

Mason 47%



Graphite per 100 tons of Mined Rock

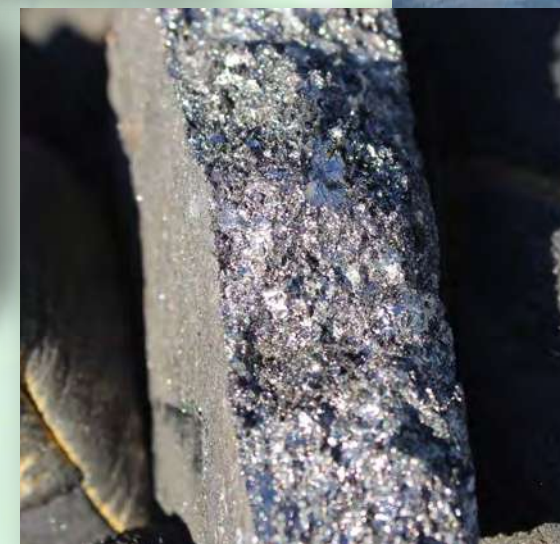
From NI 43-101* On Zone 1 Only

*See News Release: August 19, 2019: Berkwood files robust pit constrained mineral resources at its Lac Gueret South Project on SEDAR

DMineral Resource Category	Current Resource 43-101 Resource (June 2019) ⁸			Cut off (% Cgr) ³
	Tonnage (Mt) ^{5,7}	Grade (% Cgr) ³	Cgr (t) ⁶	
Indicated	1,76	17.00	299,200	6.81%
Inferred ⁴	1,53	16.4	250,200	6.81%

Characteristics	Main	Layer 01
Length (m) ¹	290	340
Azimuth (°)	80	42
Maximum width (m)	130	35
Surface Area (km ²)	0.13	

Parameters	Values
Operating Cost	92 \$/t
Recovery	90%
Selling Price Cg	1,153 \$/t



Green Battery Key Investment Drivers:

- High-Grade Graphite - 17% average grade.
- 70% -80% of our resource is Large to Jumbo flake size.
- Metallurgical Tests Yield 97.8% Graphite.
- Easily Purified to 99.95% using Standard Alkaline process. (Environmentally friendlier).
- Green Battery is an ESG Committed Company
- Quebec Location - One of the best jurisdictions to mine in the world.
- Infrastructure - Dams, Road Access, Ports, Railway, and Workforce close by.
- 4 very successful drill programs.
- Year-round access.
- On surface resource - open pit.
- Reclamation cost low.
- 11 other outcrop locations on the property
- Large to Jumbo flake size, will make spherical graphite – which is used in the anode of batteries.
- Easily expandable for industrial uses.
- Short fuse to production using a simple mining process.
- De-risked compared to other graphite projects.
- Low cost; both cap and operating.
- 550,000 Tonnes of graphite and growing. (43-101 Resource Estimate)
- Carbon6 off-take agreement.

Location – Next To Mine

*“The best place to look
for a new mine is in the
shadow of head frames.”
Where there is one mine
there is often others!*

OCEAN PORT
RAILWAY
WORK FORCE
HEAVY INDUSTRIES
& SERVICES



Proximity To All Essential Infrastructure



Manic 5 Dam



Green Battery Quick Facts

1. Green Battery Minerals is now one of the industry leaders regarding property ownership in the area.
2. Green Battery Minerals Berkwood project is adjacent to Mason Graphite (TSX:LLG) and their massive +10m contained tonnes.
Mason Graphite: Paved the way for Green Battery Minerals Inc.
3. Green Battery Minerals property location benefits from advanced roads, power, workforce, a port, and has a proposed graphite plant in place.
4. Committed to ESG

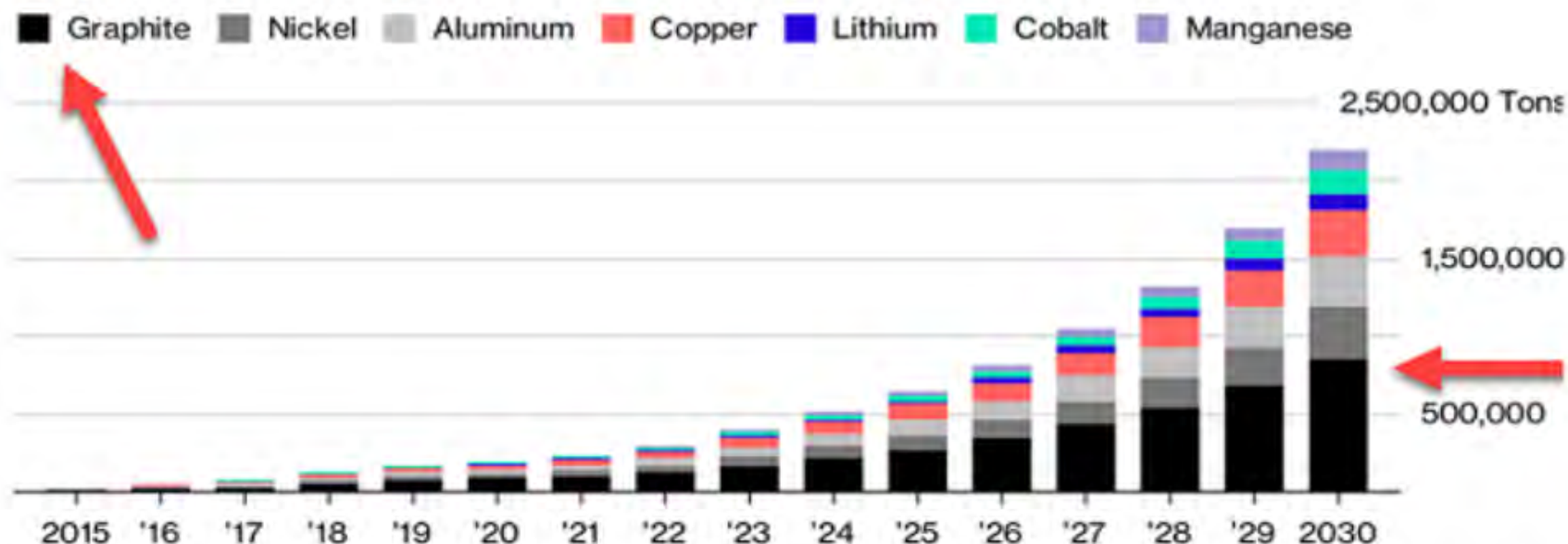


DEMAND FOR GRAPHITE IS GROWING

- EV DEMAND - 10 countries have mandated EV cars by 2030 to 2040
- SOLAR AND WIND FARMS - storing energy to sell at peak times
- HOME – batteries to store energy from solar roofs.

Metal Winners

Graphite demand is forecast to soar as electric vehicle market expands



Source: Bloomberg New Energy Finance

Bloomberg

Price Of Graphite

Green Battery Has Large Jumbo Mesh (flake) Size High Grade Graphite

Graphite Product	Carbon Content%	Mesh Size	Graphite Size (micron)	Approximate Price US\$/t*
Jumbo Flake	94 – 97%	+48	+48	\$2000
Large Flake	94 – 97%	-48 to +80	-48 to +80	\$1,300
Medium Flake	94 – 97%	-80 to +100	-80 to +100	\$1,100
Fine Flake	94 – 97%	-100 to +200	-100 to +200	\$750
Amorphous	80 – 85%	-200	-200	\$450
Synthetic	99.95			+\$7500

Robust Metallurgy *We Have Large Flake and High Grade Graphite – Type and Grade In Demand By Wide Spectrum Of Industrial Sectors*

97.8% Grade From Metallurgical Testing

Classification	Size Fraction (US Mesh)	Weight %	Cgr(%)
Very Course	20 X 50	39.5	97.6
Course	50 X 100	50.0	98.0
Fine	100 X 200	10.4	98.0
Total:		100.0	97.8

See News Release Feb, 7th 2019: **Berkwood Metallurgical Tests Yield 97.8% Graphite In Concentrate Grade**



Average Distribution Of Graphite

Size Range	Medium Cgr (6.81% – 15% grade)	High Cgr (15% – 35+% grade)
20 to 50 Mesh (Jumbo Flake)	51.30%	47.10%
50 to 100 Mesh (Large Flake)	28.70%	21.50%
Less than 100 Mesh (other)	20.10%	31.40%

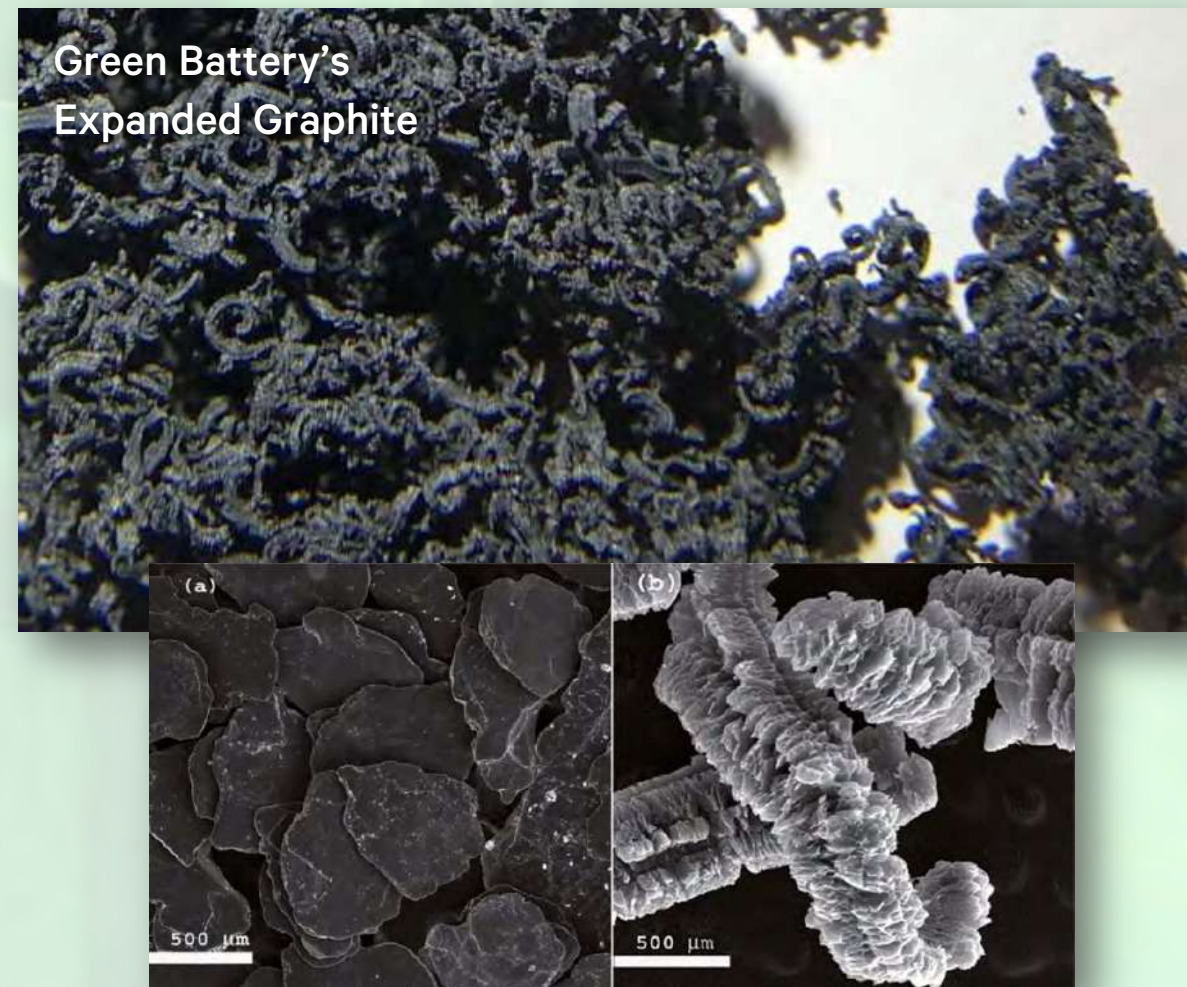
See News Release March 8th 2018: **Berkwood Announces Large Flake Characterization results at Lac Gueret Project Quebec.**



The Main Findings Of ProGraphite Are:

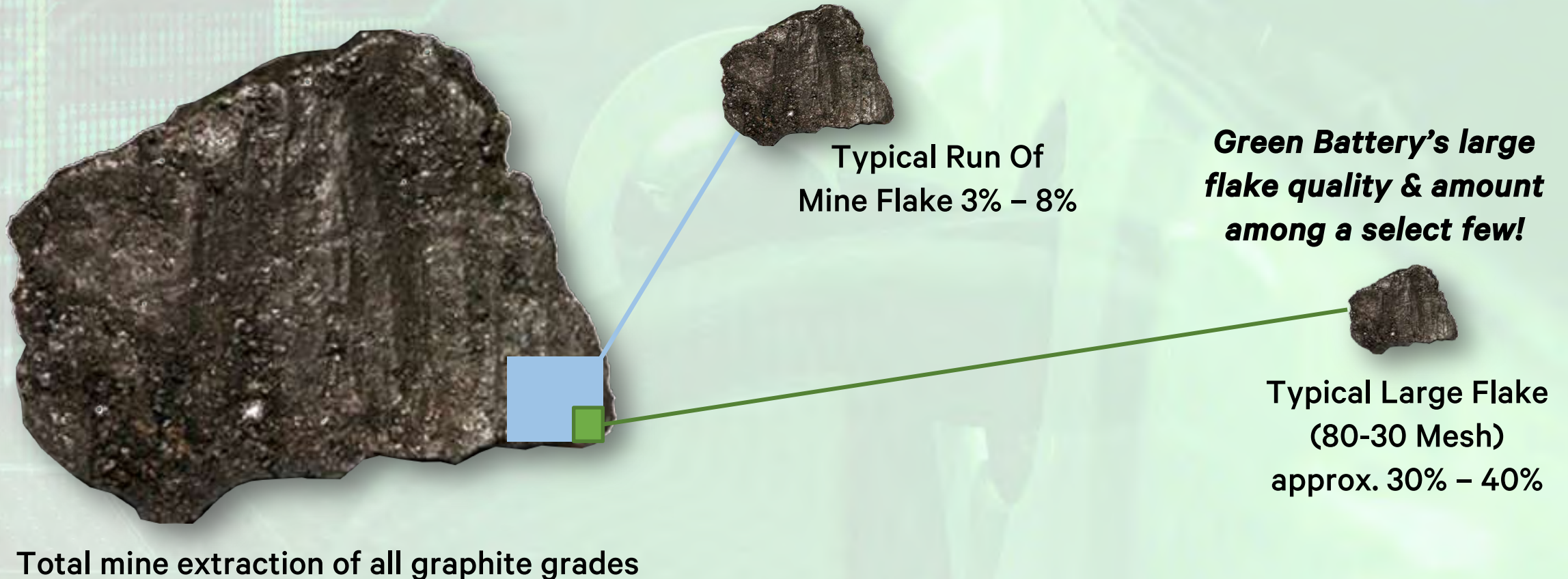
- The material is easily purified to 99.95% by the standard alkaline process.
- The material is very suitable for the production of expandable graphite, having achieved densities of 380 and 390ml per gram.
- The size distribution of the graphite in the concentrate shows a coarse flake size, above average.
- Graphite carbon grade of the concentrates produced is high at 97% Cgr.

See News Release August 27th 2019: **Berkwood Reports Excellent Results from Purification (99.95%) and Expandable Graphite Tests**



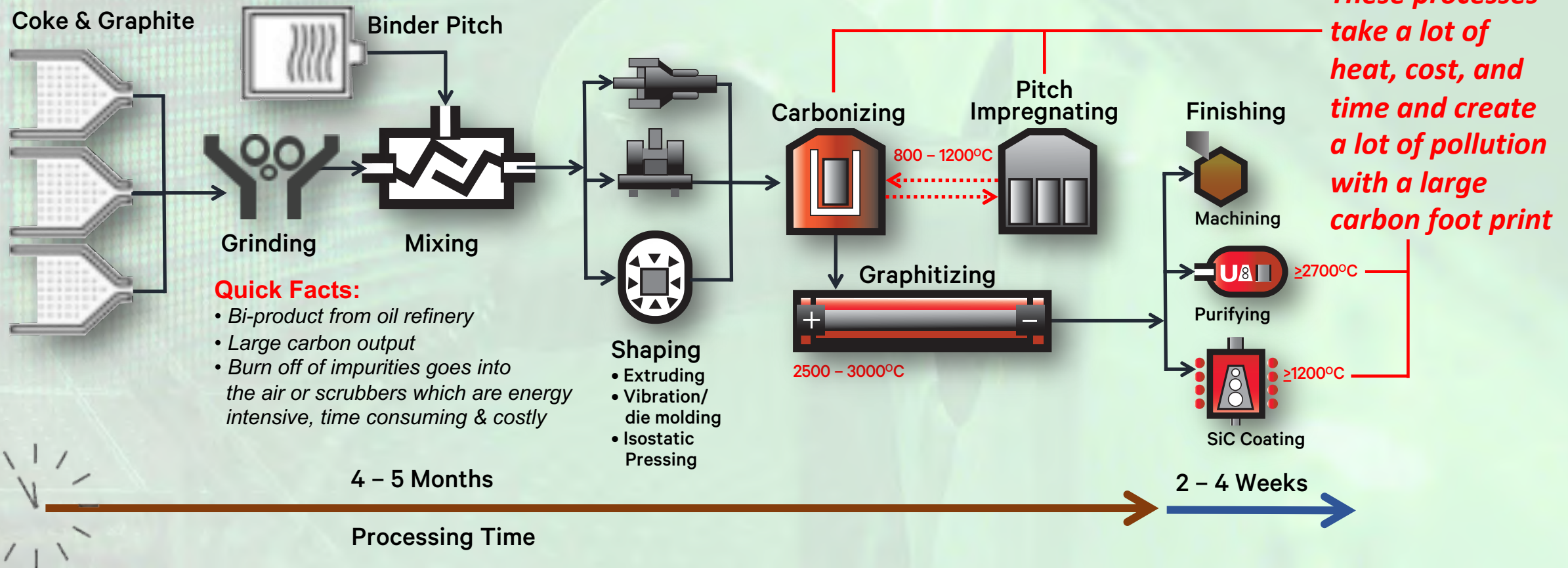
The Scarcity Of Natural Graphite

1000 Mt Mined Could Equal 9 – 32 Mt of Large Usable Flake



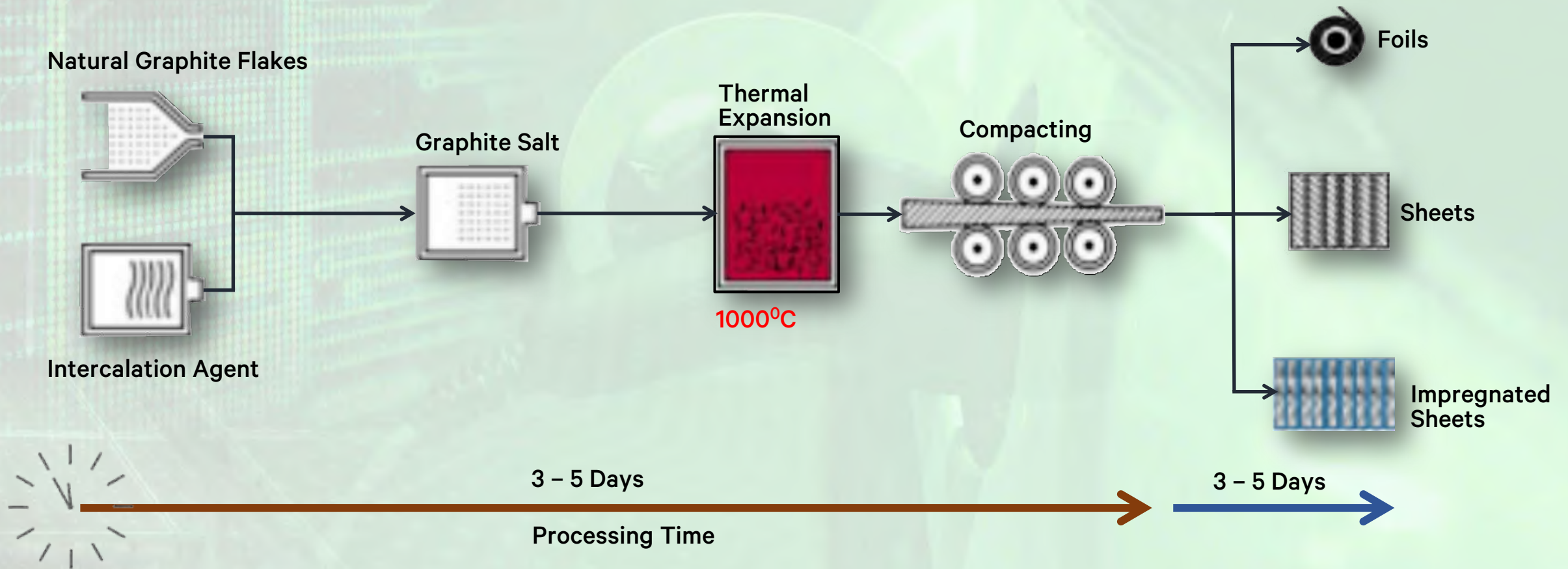
The Conventional Steps To Manufacturing Synthetic Graphite

Synthetic Graphite Manufacturing Is Complex and Requires Multiple & Expensive Steps For A Total Of 4 To 6 Months Production Time



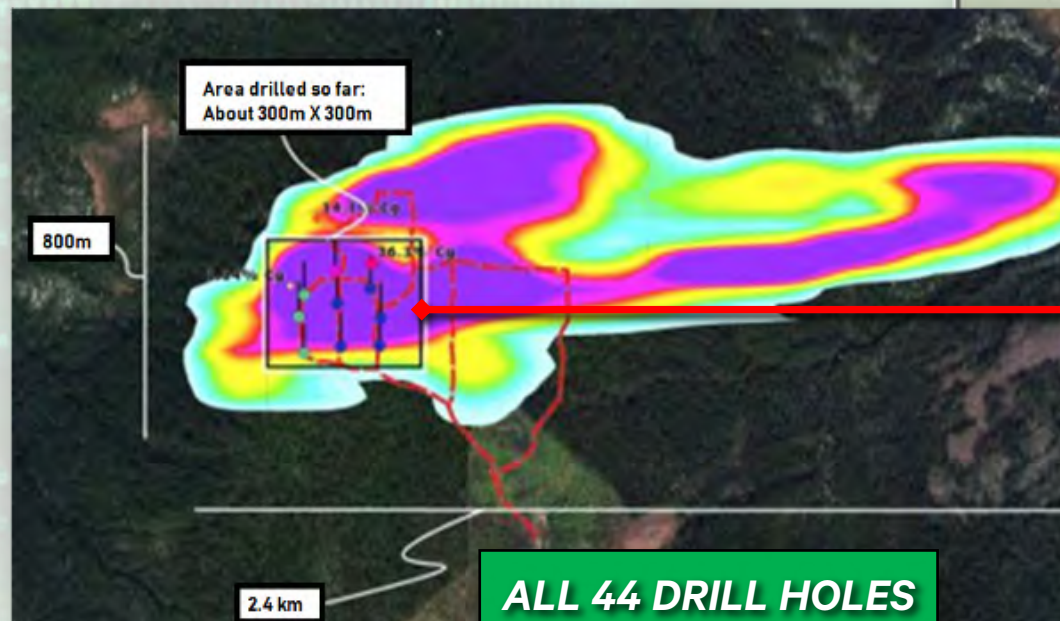
The Unique Properties Of Natural Graphite Are Captured In Expanded Graphite Foils

Manufacturing Process Of Expanded Graphite

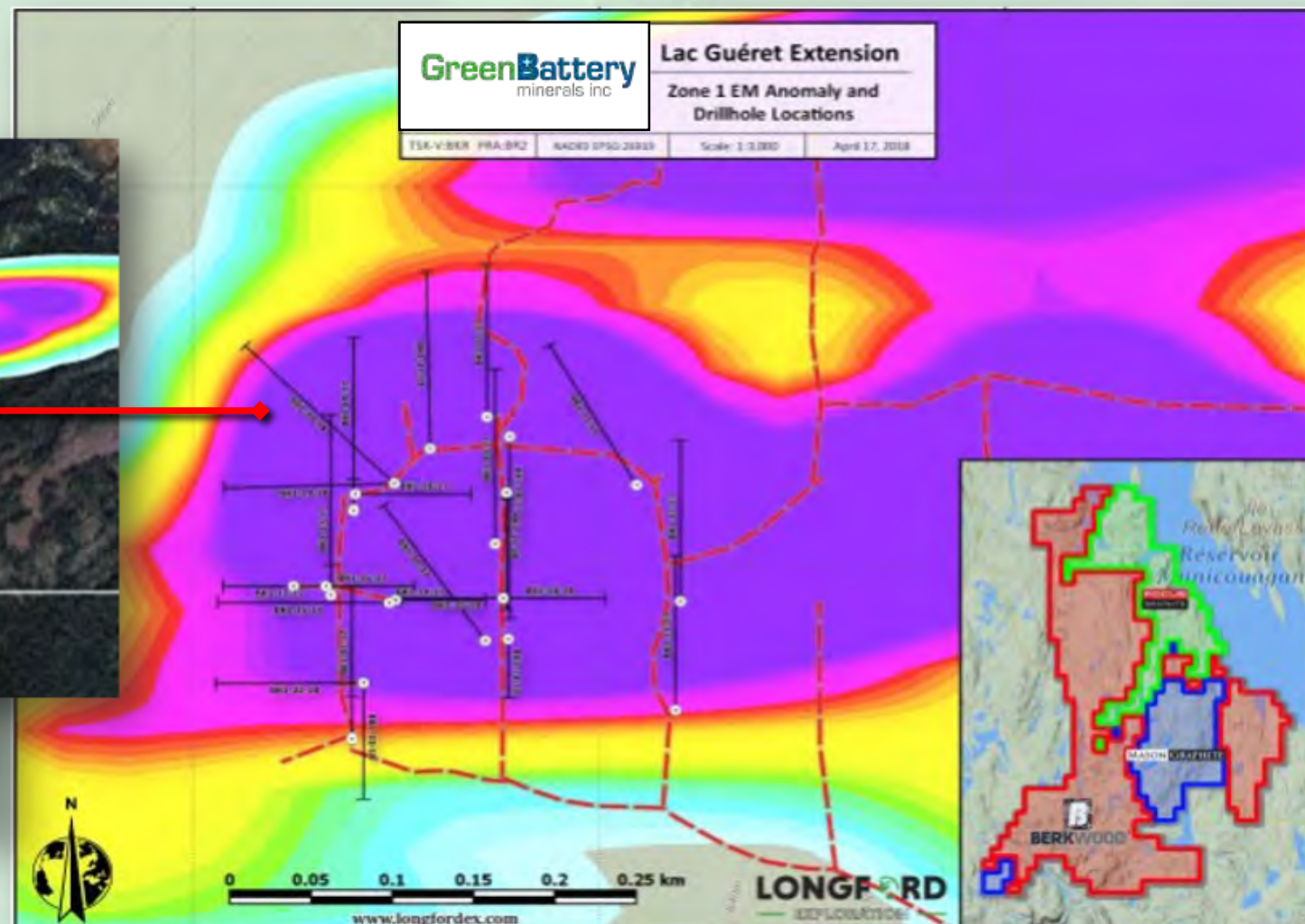


ZONE 1 – Airborne EM Anomaly

Every drill hole intersected with Graphite.

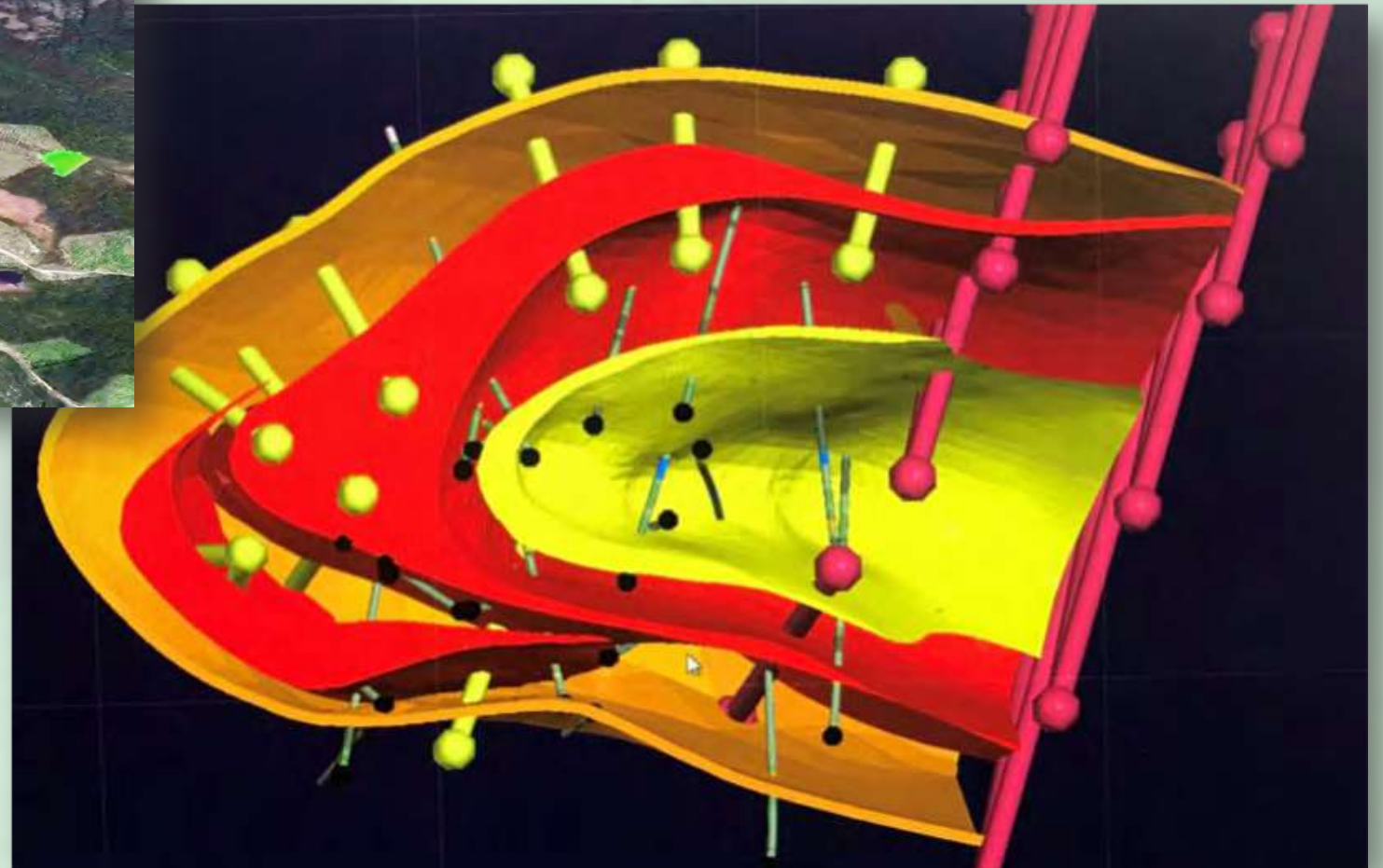
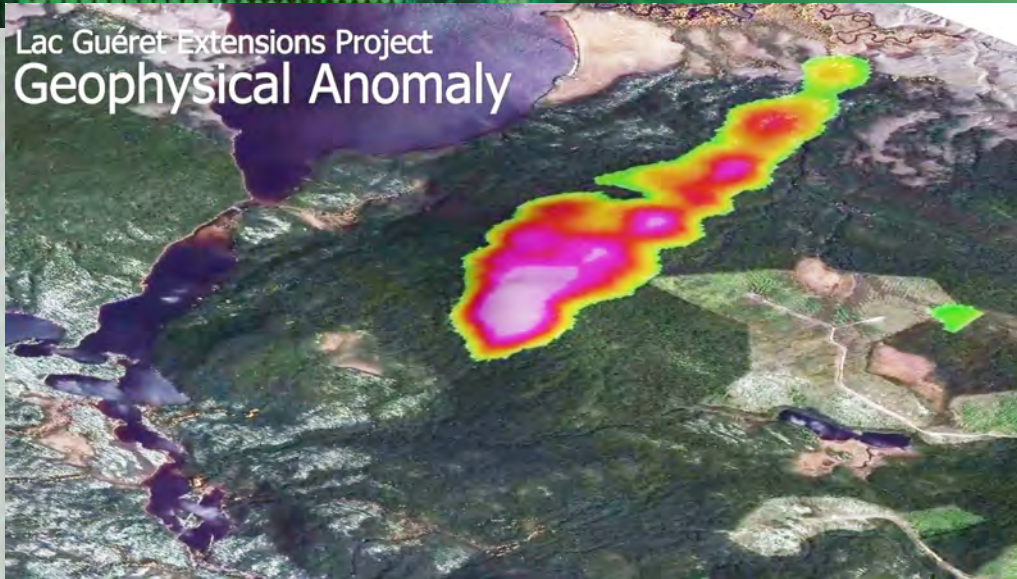


**ALL 44 DRILL HOLES
HAVE INTERSECTED
GRAPHITE**



3D MODEL

Lac Guéret Extensions Project
Geophysical Anomaly



History Of Work Completed On Property

2002 Heli Survey

2014 Air – Borne Geophysical Survey – Identified several large zones of conductivity

2015 Surveys were followed up with ground geophysics

2017 3 drill programs completed for 27 holes and 4006m drilled

2018 3D model created from previous drill programs:

- Mise-A-La-Masse geophysical survey completed
- Metallurgical testing completed

Excellent results from:

- 4th drill program completed for 17 holes and 2084m drilled
- 3 large outcrops discovered

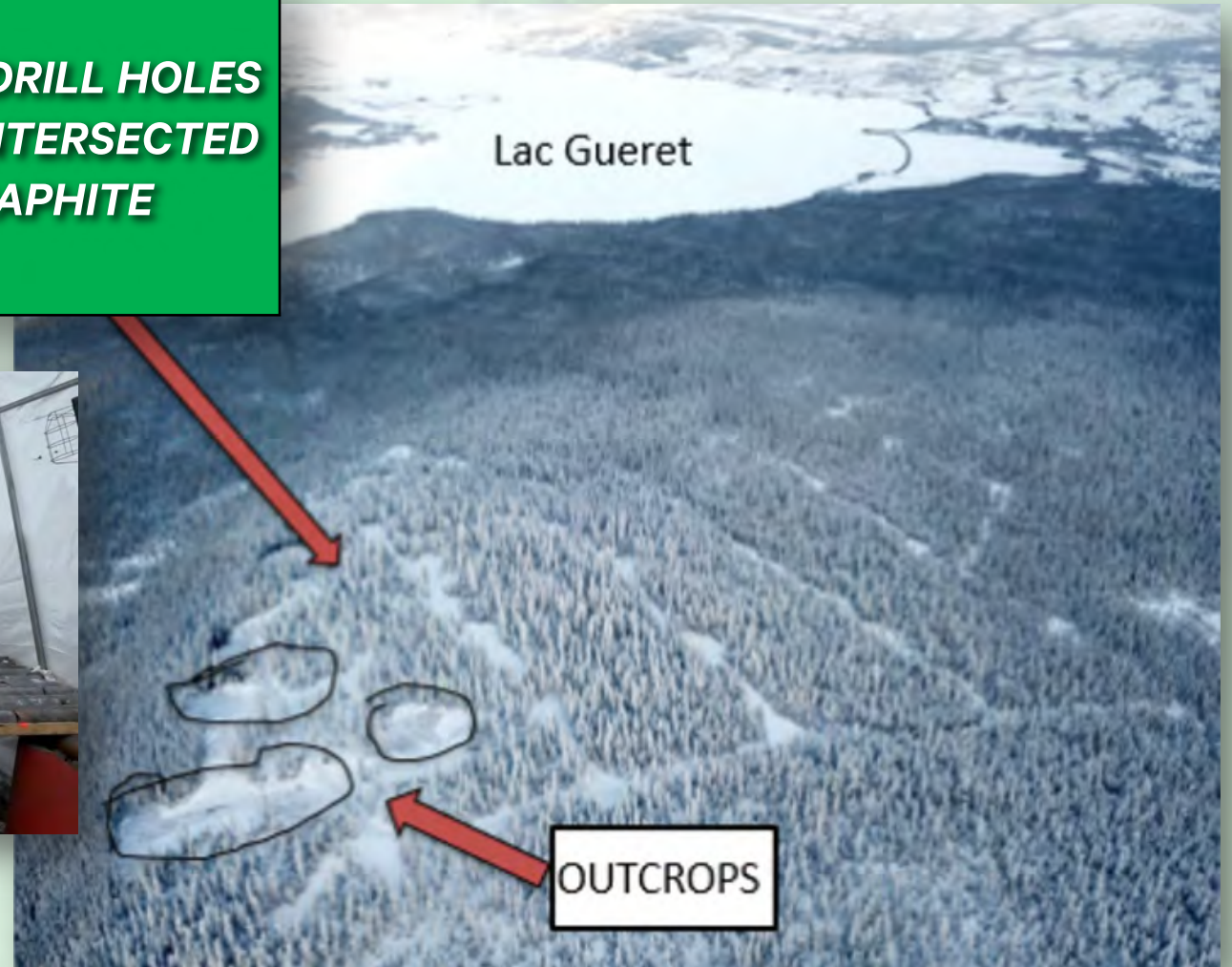
2019 43-101 Resource Estimate Completed



Aerial View Of Holes Drilled



**ALL 44 DRILL HOLES
HAVE INTERSECTED
GRAPHITE**



ZONE 1



ZONE 1

**Zone 1
Outcrop 1
Open on either side**



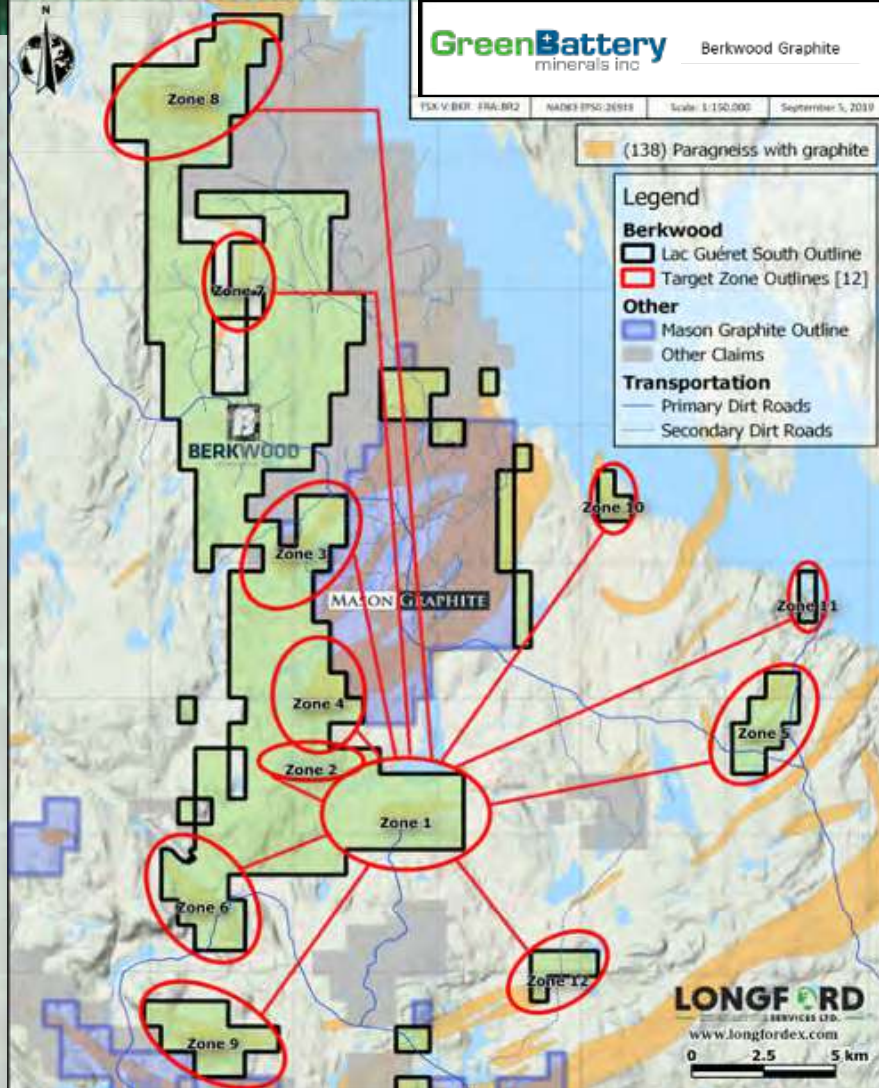
Ryan walking on a road of graphite.

Graphite at Surface.

**Zone 1
Outcrop 2
Open on either side**



Numerous Outcrops Throughout GEM's Claims

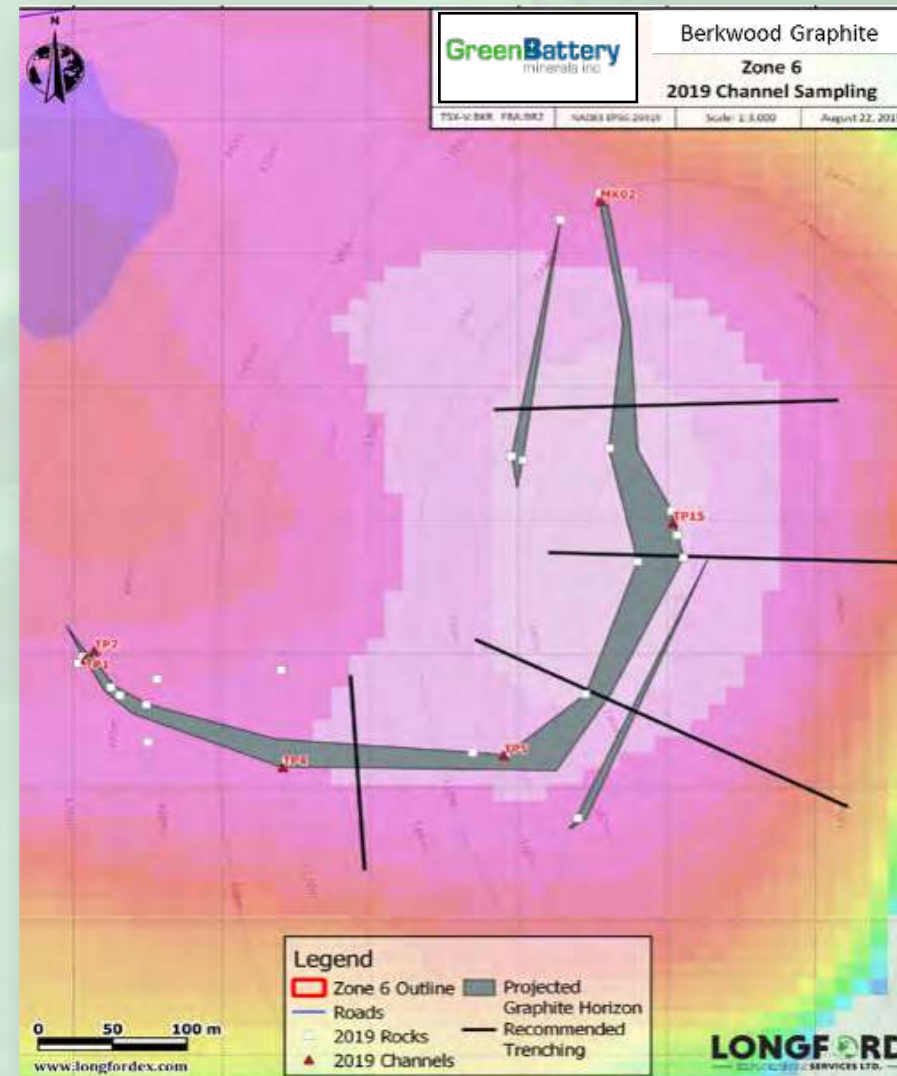
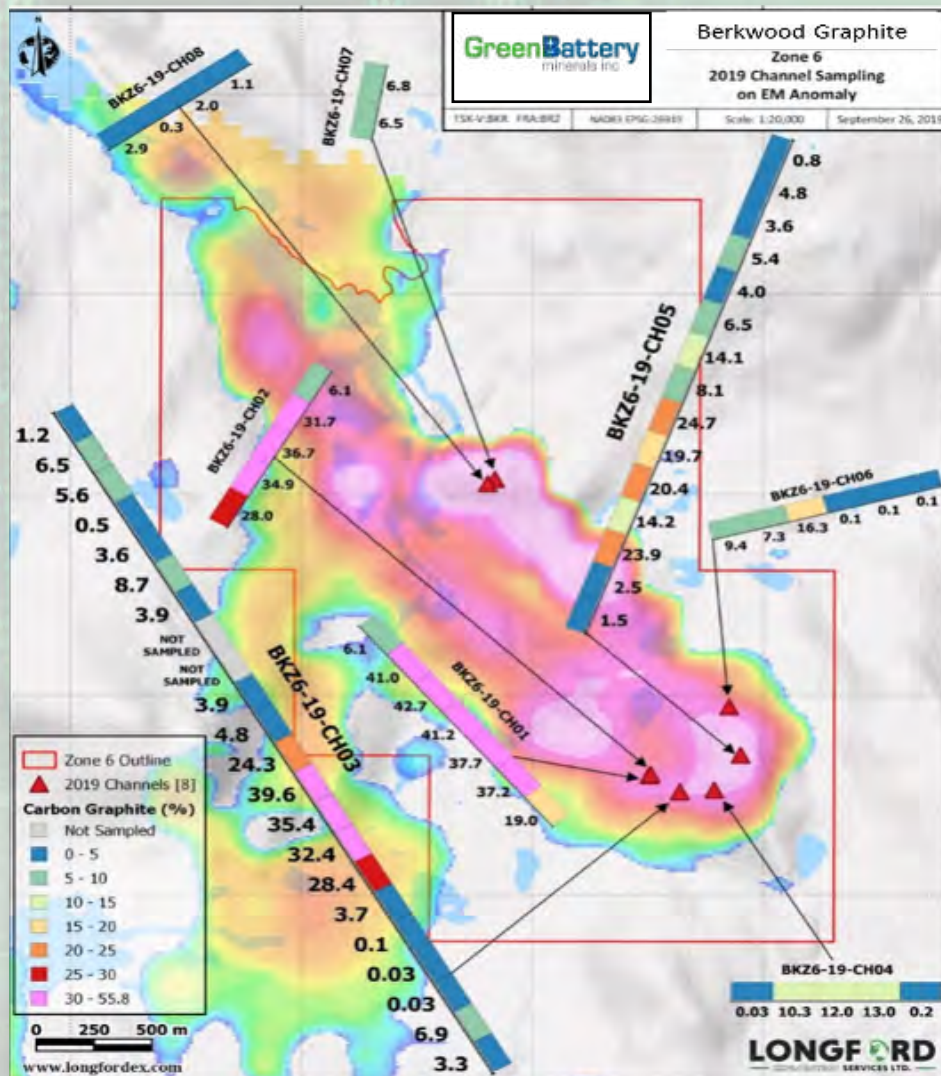


ZONE 6 Outcrops

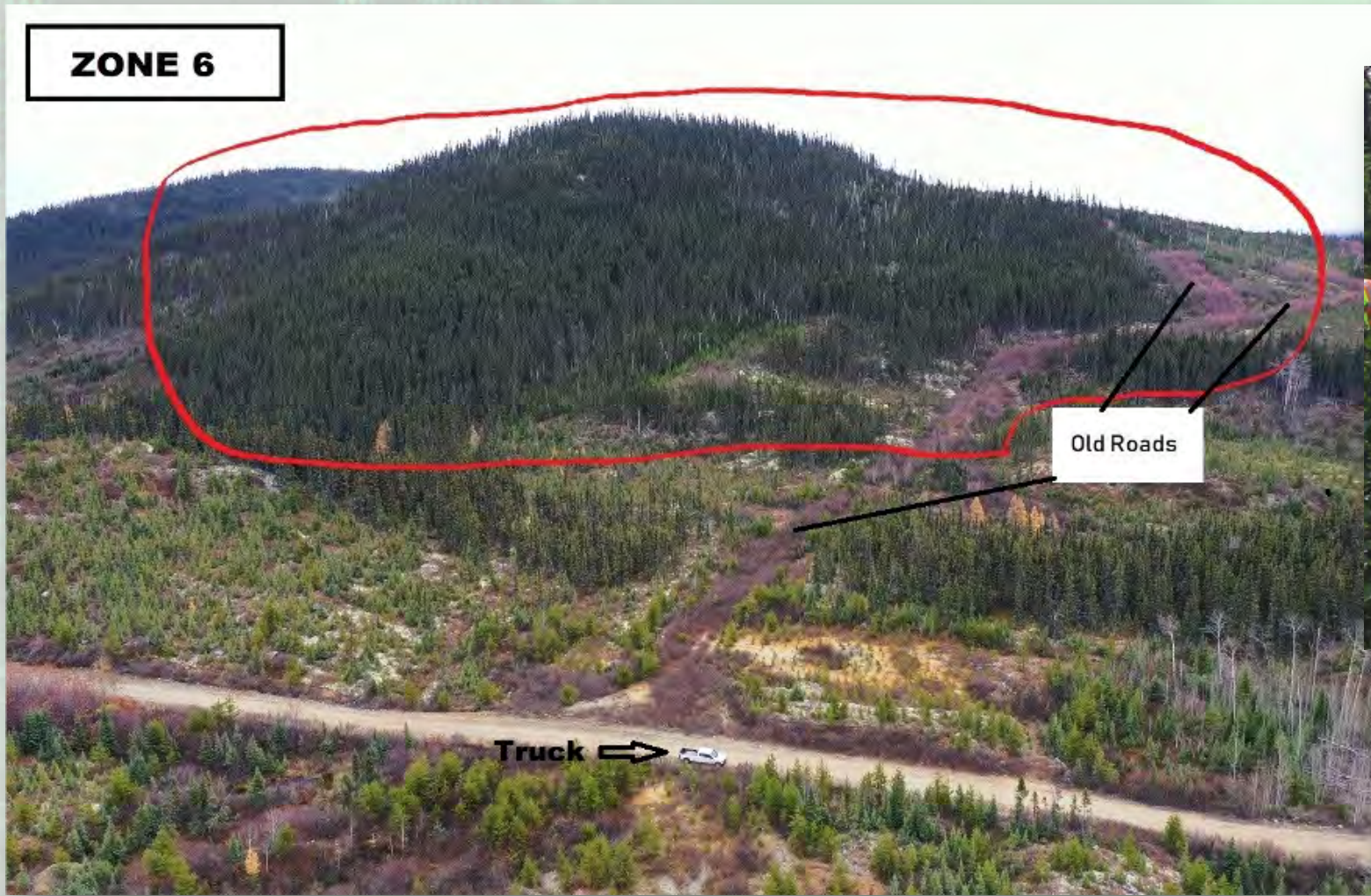


ZONE 6 Outcrops

TSX.V: GEM Frankfurt: BR2P (WKN: A2QENP) OTC: CZ5VF



ZONE 6 Road Access



Adding Value To Graphite (Coated Spherical Graphite)

By adding two process to the end product of Nature Large Flake Graphite, the value can be increased greatly. This end product is what is used in the Anode Part of LiB. The back-bone of the EV, storage and future needs batteries.

Price of Nature Large Flake Graphite: \$2,000 /ton*

Price of Sphericalized Nature Large Flake Graphite: \$3,000/ton**

Price of coated Sphericalized Nature Large Flake Graphite: \$7,500/ton**



We want to build a plan to purify our graphite, sphericalized it and coat it.

*[Roskill : https://www.mining.com/spherical-graphite-producers-impacted-by-low-demand/](https://www.mining.com/spherical-graphite-producers-impacted-by-low-demand/))

** [Roskill: https://roskill.com/news/graphite-haida-new-energy-material-to-begin-coated-spherical-graphite-production/](https://roskill.com/news/graphite-haida-new-energy-material-to-begin-coated-spherical-graphite-production/))

** Roskill: The average value of Chinese exports of mostly uncoated spherical graphite was US\$3,152/t in 2019, but China's much smaller imports of mostly coated spherical graphite was US\$7,157/t, although prices may reach in excess of US\$20,000/t with some coatings.

Green Battery's Timeline

6 month Plan

Prove out batteries

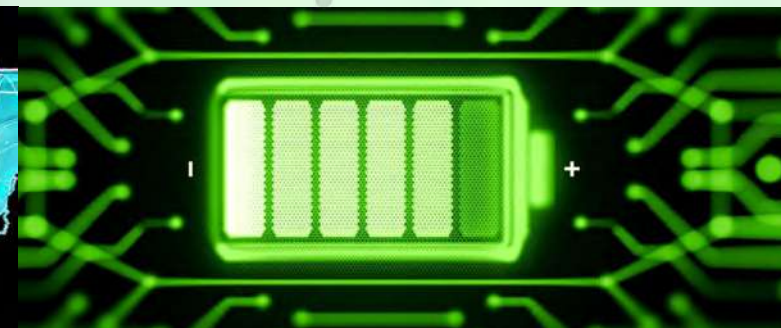
Bulk Sample

Drill zone 6

2 year Plan

Offtake agreements

Production



TSX.V: GEM Frankfurt: BR2P (WKN: A2QENP) OTC: GBMIF

Green⁺Battery

minerals inc



Plugged Into High Tech Minerals

1100 – 1111 Melville Street, **Vancouver** BC V6E 3V6
Phone: 604.343.7740

2200 – 1250 Rene Levesque Blvd. **Montreal** QC H3B 4W8
Phone: 438.469.0705

reduce
reuse
recharge

C

[He]2s²2p²
carbon